

VIRTUAL PUBLIC MEETING

CARIBBEAN BOULEVARD BRIDGE 874331 OVER C1-N CANAL

# Bridge Replacement Project

**Project No. 20190279**

**March 3, 2021  
6:30pm- 8:00pm**



# AGENDA

- Welcome and Introductions
- Virtual Meeting Guidelines
- Project Location
- Existing Bridge Conditions
- Project Description
- Project Improvements
- Temporary Traffic Control
- Schedule
- Question and Answer

# COUNTY PROJECT TEAM

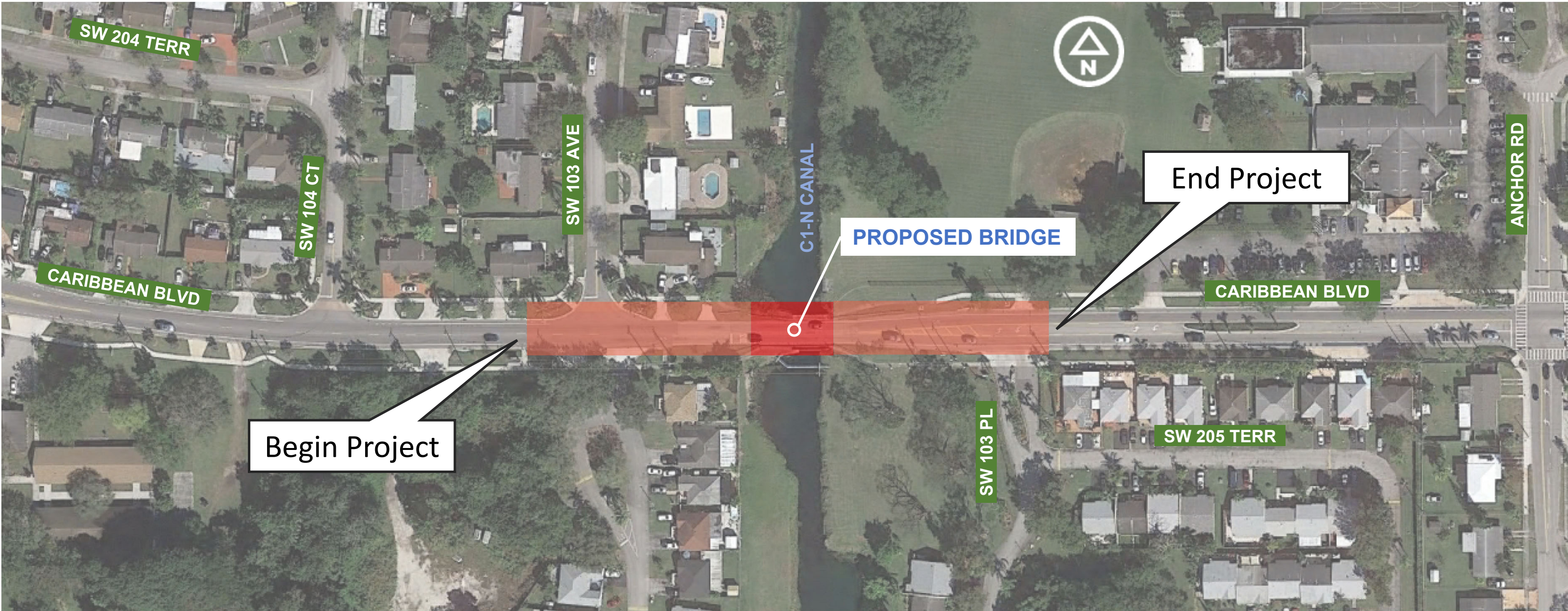
- **Frank P. Guyamier, P.E.**, Deputy Director, Department of Transportation and Public Works
- **Elia Nuñez, P.E.**, Assistant Director, DTPW Engineering, Planning & Development Division
- **Ryan Fisher, P.E.**, Manager, DTPW Highway Bridge Engineering Division
- **Gabriel Delgado, P.E.**, Project Manager, DTPW Highway Bridge Engineering Division
- **Juan Santandreu, P.E.**, Construction Project Manager, DTPW Construction Division
- **Alex Meitin, P.E.**, Project Manager, Jacobs Engineering Group

# GUIDELINES

In an effort to maintain a safe and respectable forum, we ask that participants abide by the following guidelines during the designated Q&A portion. Violators are subject to removal from meeting.

- All participants' microphones will remain muted, unless it is their turn to speak
- Raise hand to ask a question
- Profanity or inappropriate language will not be tolerated
- When speaking, be mindful of background noises
- Speaking time is limited
- Violators are subject to removal from meeting

# PROJECT LOCATION



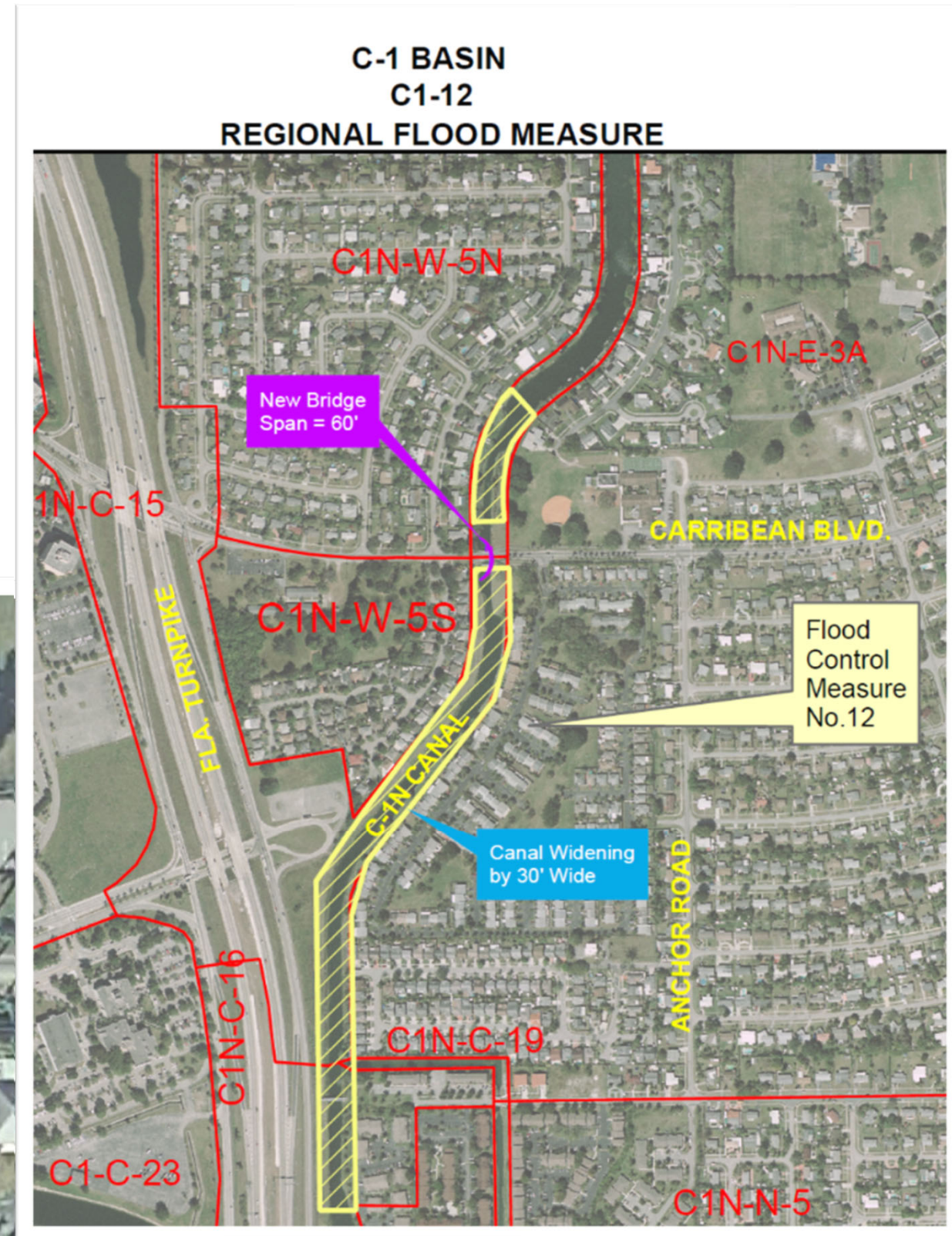
# EXISTING BRIDGE CONDITIONS

- Bridge was constructed in 1963 – 58 years old
- Identified for canal widening in RER Storm Water Master Plan
- Categorized as Functionally Obsolete by FDOT



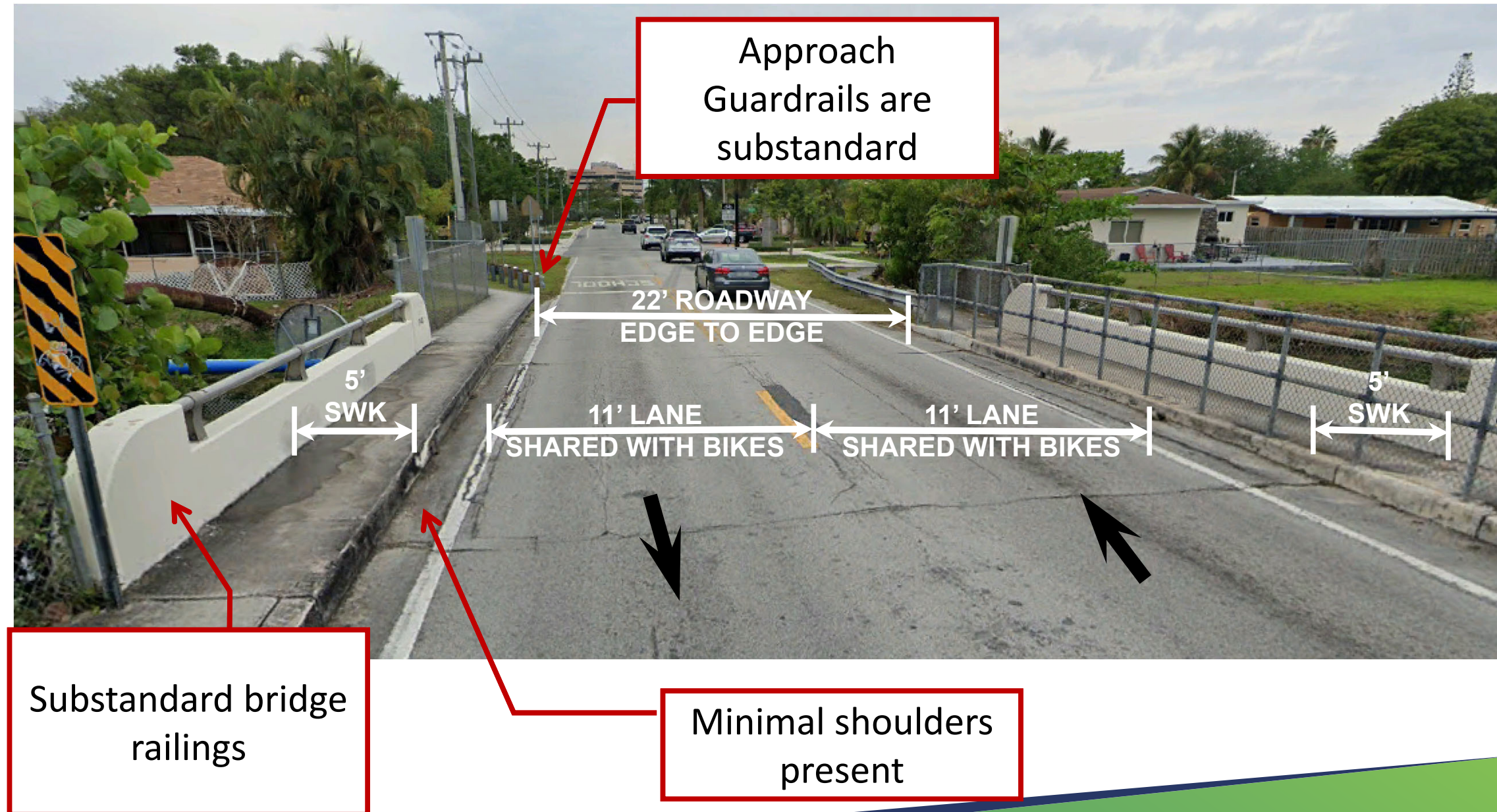
# EXISTING BRIDGE CONDITIONS

- Identified for canal widening in Storm Water Master Plan.
- Existing Canal dimension creates a constriction, affecting nearby water sub-basins.



# EXISTING BRIDGE CONDITIONS

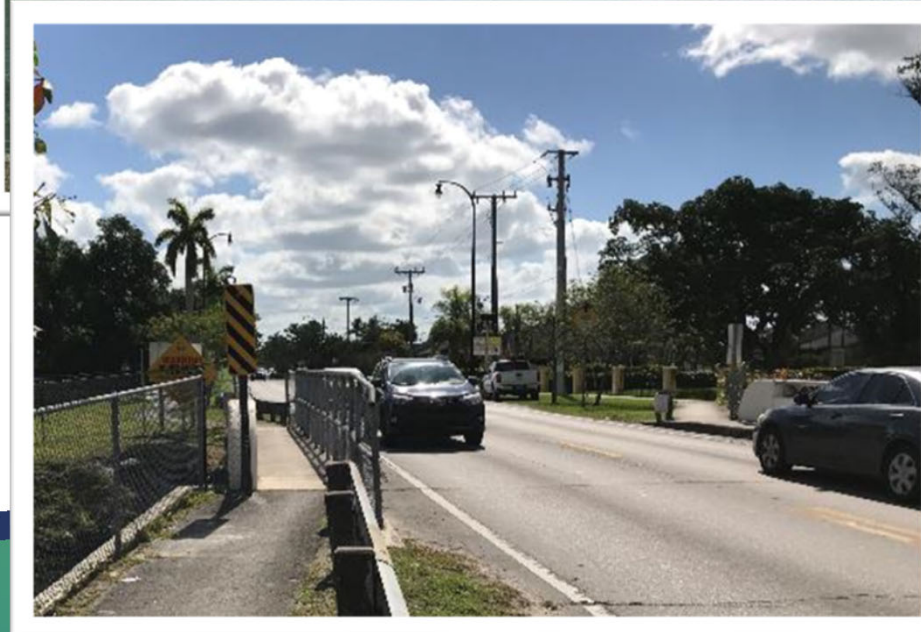
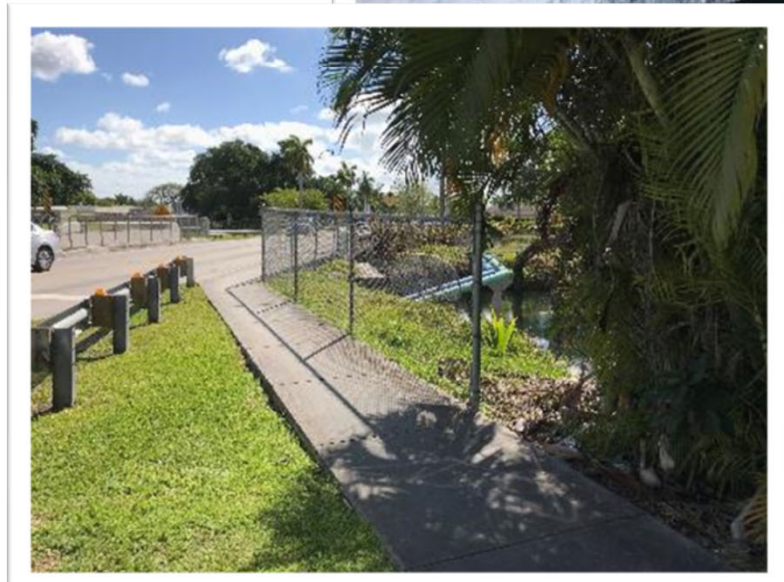
- Substandard Railings
- Minimal Shoulder width
- Bicycles share vehicular lanes





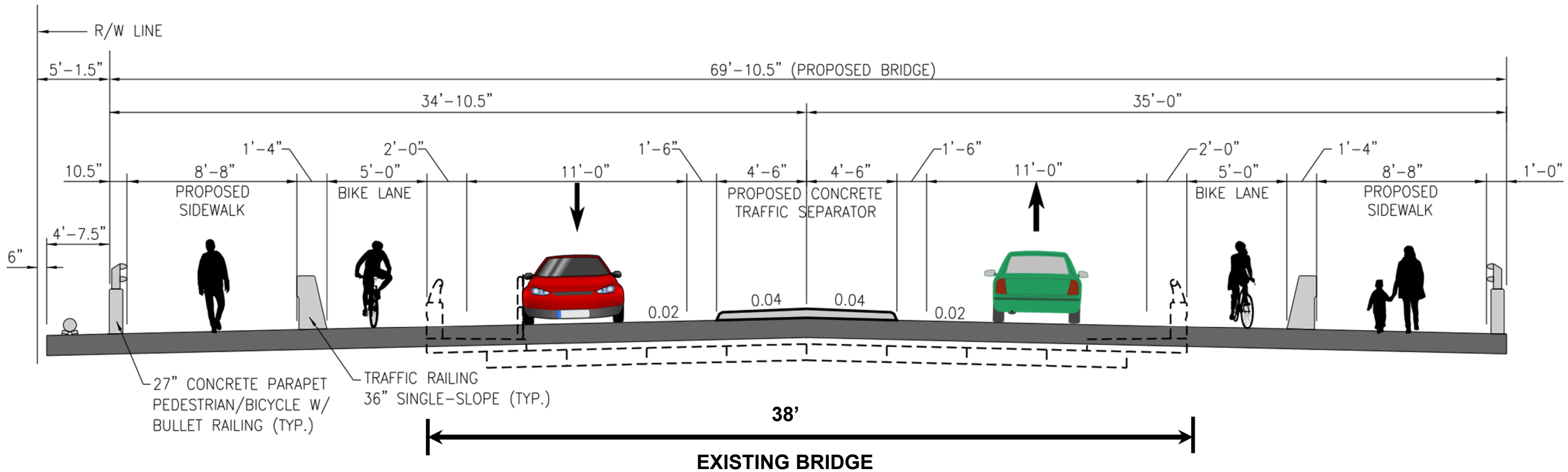
# PROJECT DESCRIPTION

- Replacement of existing functionally obsolete bridge with wider and longer span bridge
- Wider bridge allowing for Pedestrian and Bicycle safety enhancements
- Roadway milling and resurfacing



# PROJECT IMPROVEMENTS

## PROPOSED TYPICAL SECTION

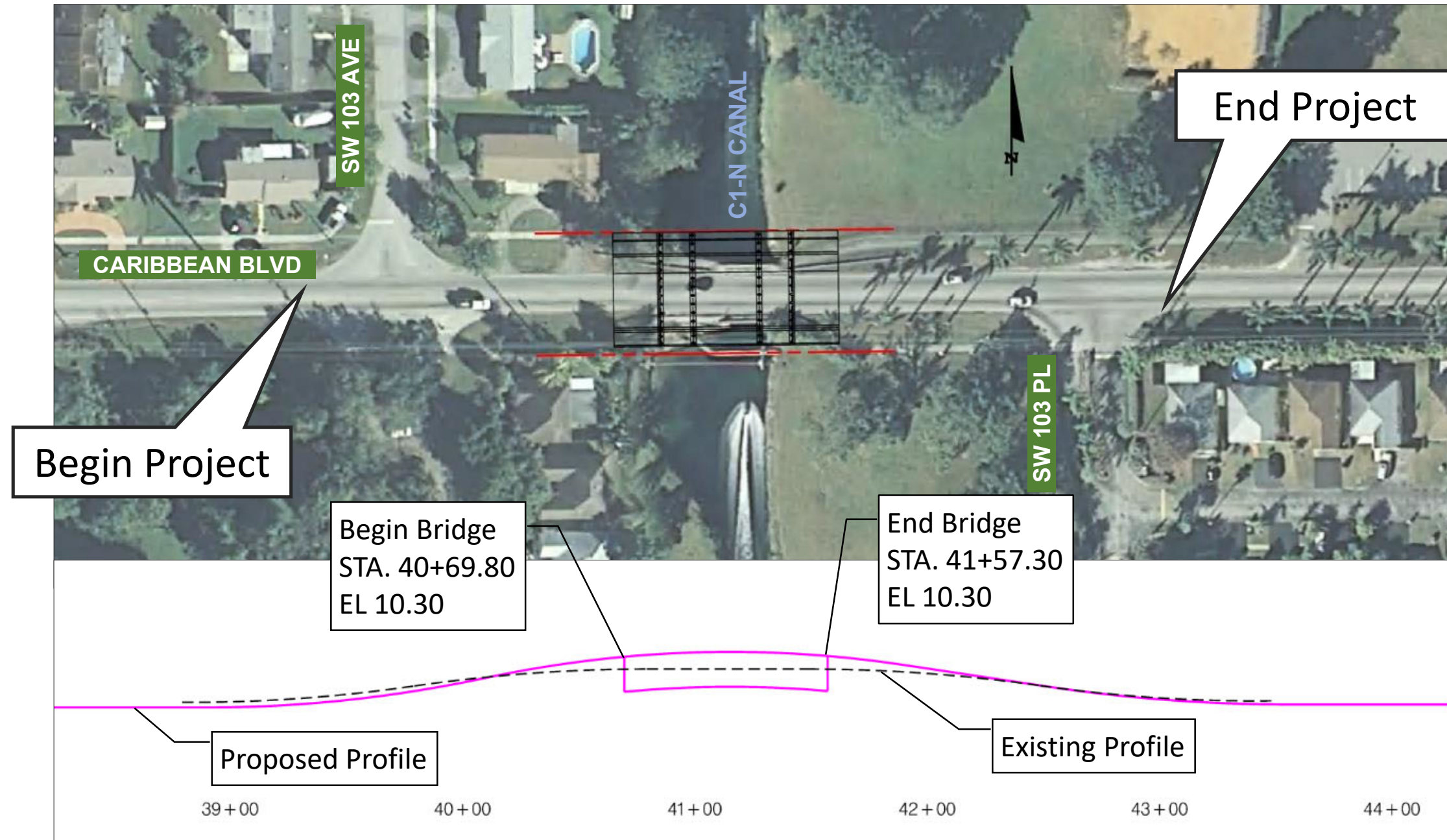


- 11-ft Lanes
- 5-ft Bicycle Lanes (Exist. Shared with Roadway)
- 8ft-8in Sidewalks (Exist. 5 ft)

# PROJECT IMPROVEMENTS

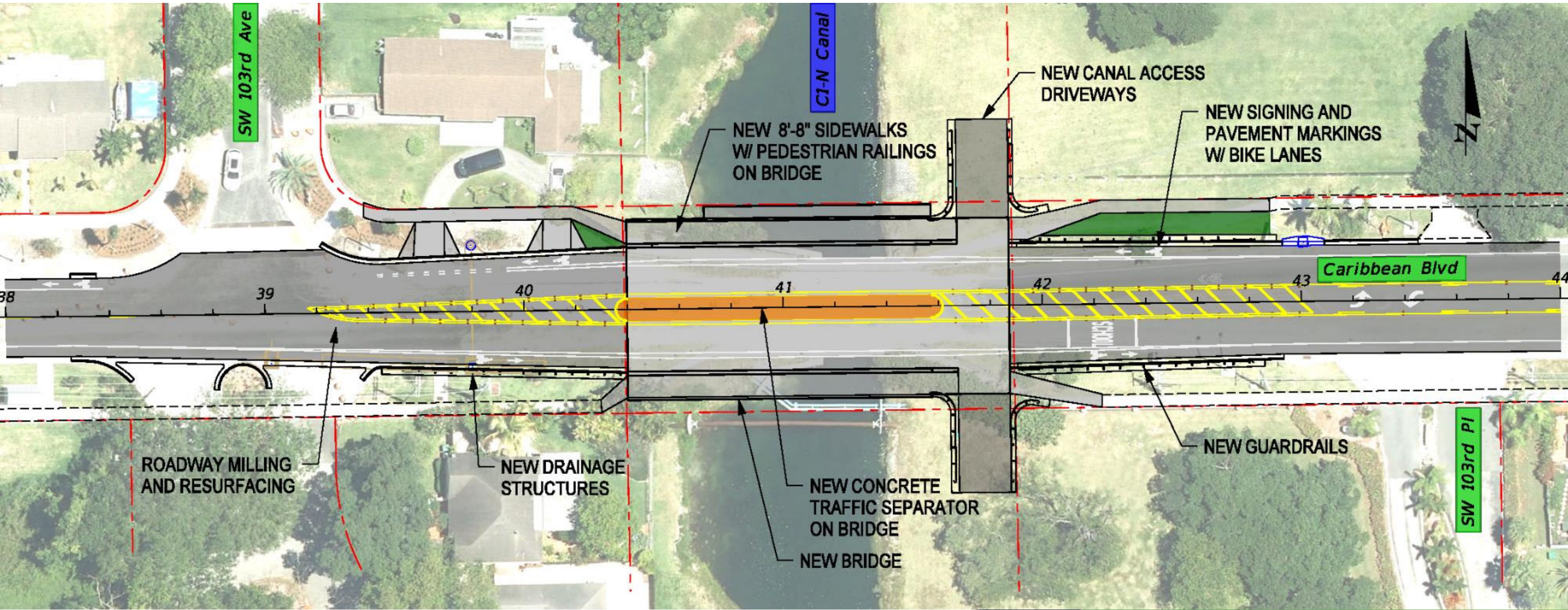
## PLAN VIEW

- Wider and Longer bridge
- Safety improvements: new bicycle lanes
- Wider sidewalk
- Improved waterway



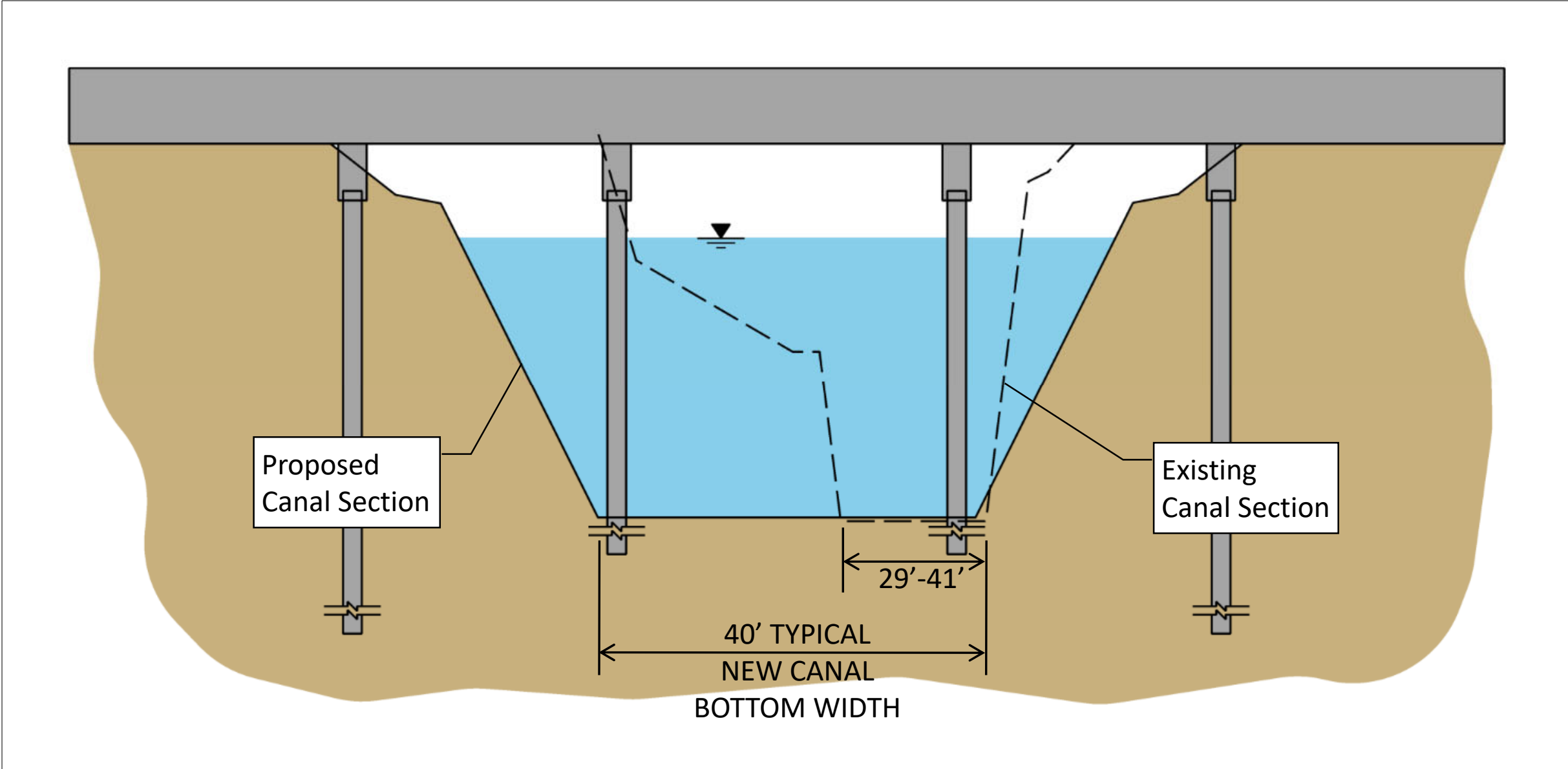
# PROJECT IMPROVEMENTS

## PLAN VIEW

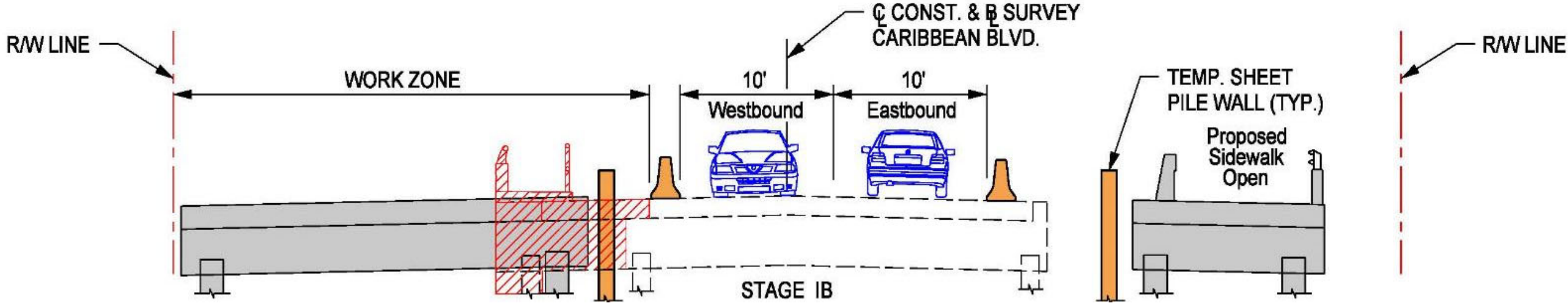
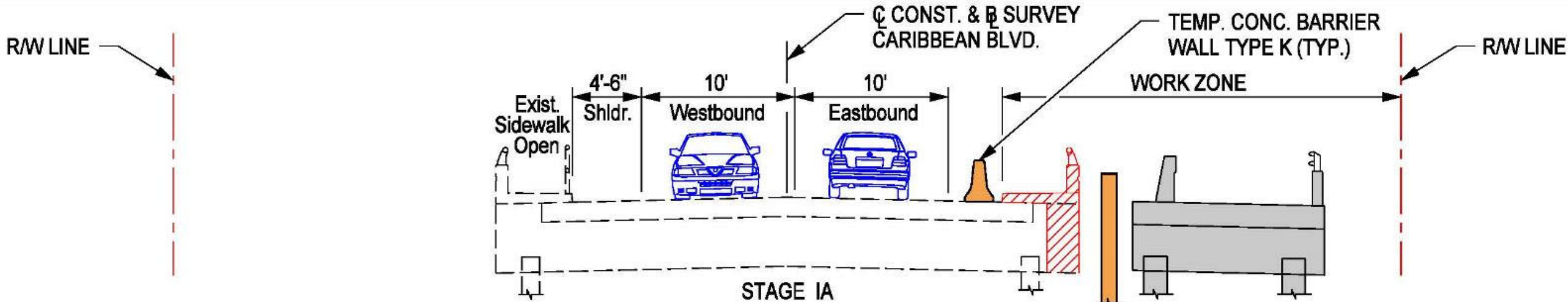


# PROJECT IMPROVEMENTS

## CANAL SECTION

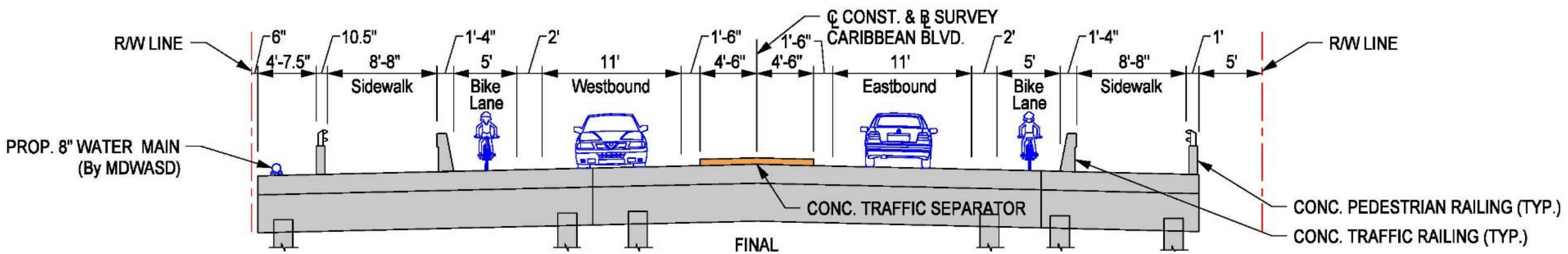
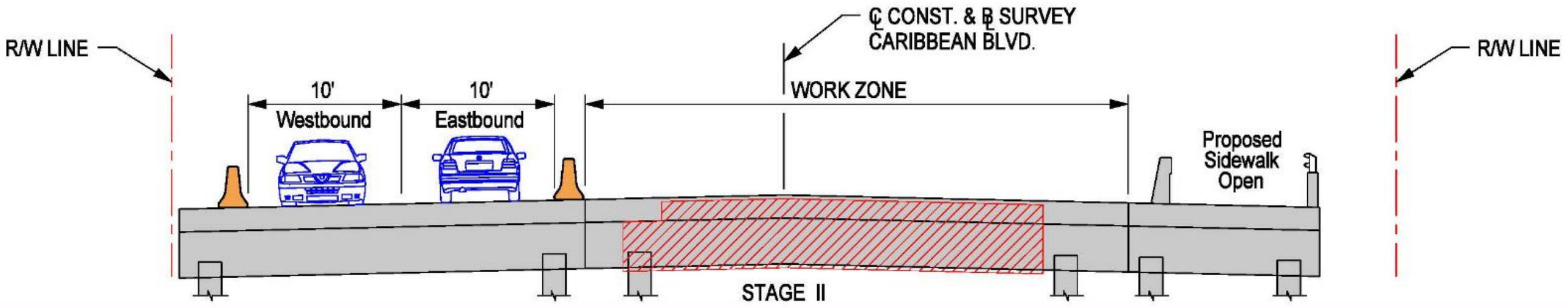


# TEMPORARY TRAFFIC CONTROL PLAN



# TEMPORARY TRAFFIC CONTROL PLAN

(Continued)



# SCHEDULE

- Design complete
- Construction Start: Spring 2021
- Estimated Construction End: Fall 2022





# IN SUMMARY

- Existing bridge causing canal Constriction
- New wider bridge with improved geometry
- Wider sidewalks
- New bicycle lanes
- Barrier separated sidewalk
- Milling and resurfacing of adjacent asphalt pavement



# QUESTION & ANSWER

## REMINDERS:

- Raise hand to ask a question – if dialing in, press \*9
- Profanity or inappropriate language will not be tolerated
- When speaking, be mindful of background noises
- Speaking time is limited to 2-minutes per speaker
- Violators are subject to removal from meeting

# ADDITIONAL QUESTIONS?

---

- Email [Jennie.Lopez@MiamiDade.gov](mailto:Jennie.Lopez@MiamiDade.gov) to ask additional questions.
- Emailed questions will be addressed after the meeting.

intentionally blank