

EMERGENCY CONTACT INFORMATION:

Town of Cutler Bay

Administrative Offices - (305) 234-4262
Cutler Bay Police Department - 911

Miami-Dade County Fire Rescue - 911
Office of Emergency Management - (305) 468-5400
FPL - (305) 442-8770
American Red Cross - (305) 644-1200
Special Needs - Miami-Dade County - (305) 468-5400
Bellsouth (English) - 611
Bellsouth (Spanish) - (305) 780-2840
City Gas - (305) 693-4311

SPECIAL NEEDS CENTERS

Residents requiring special assistance with daily living and need help evacuating from a hurricane should register for the Emergency Evacuation Assistance Program by calling (305) 513-7700 or visit www.miamidade.gov/oem.

EVACUATION BUS PICK-UP SITES:

Centennial Middle School 8601 SW 212 St
East Ridge Retirement Village SW 193 TER & SW 87 Ave
Cutler Ridge Park 10100 SW 200 St
Franjo Park 20175 Franjo Rd

TOWN OF CUTLER BAY

Town Council

Edward MacDougall, Mayor

Ernest Sochin, Vice Mayor

Mary Ann Mixon, Councilmember

Sue Ellen Loyzelle, Councilmember

Peggy R. Bell, Councilmember

Steven J. Alexander, Town Manager

Esther B. Coulson, CMC, Town Clerk

Mitchell Bierman, Town Attorney



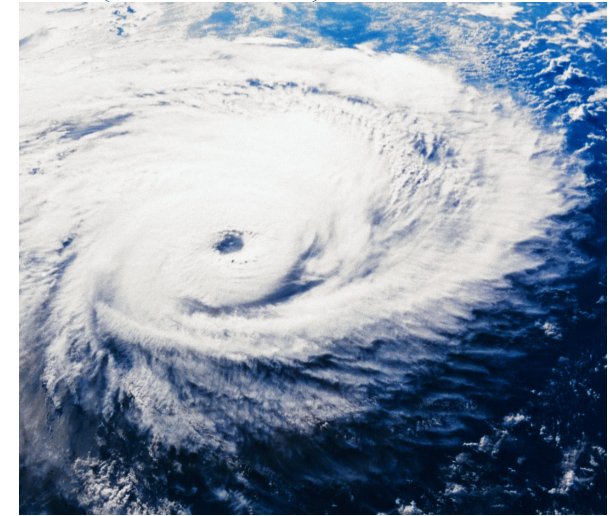
DISASTER SUPPLIES CHECKLIST

- A three-day supply of water (one gallon per person per day) and non-perishable food.
- One change of clothing and footwear per person.
- One blanket/sleeping bag per person.
- First-aid kit including prescription medicines.
- List of doctors, emergency contacts, friends or other relatives who should be notified if you are injured.
- Emergency tools and supplies including battery-powered radio, flashlight, mosquito repellant, sunscreen, a non-electric can opener, and supply of batteries.
- An extra set of car keys and cash.
- Insurance agent's name and telephone number.
- Pet Owners: Prepare enough food for two weeks and one week's worth of potable water. A carrying crate should be available to easily transport your family pet. Prepare collars and leashes, make sure your pet has an ID tag, and have a recent photo of your pet.



TOWN OF CUTLER BAY

HURRICANE PREPAREDNESS 2011



**BE PREPARED THIS
HURRICANE
SEASON**

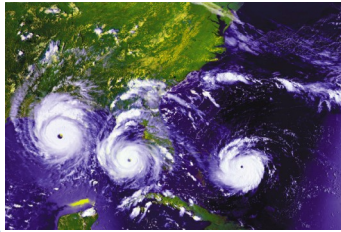
Town of Cutler Bay
10720 Caribbean Blvd.
Suite 105
Cutler Bay, Florida 33189
(305) 234-4262
(305) 234-4251 Fax
www.cutlerbay-fl.gov



BE PREPARED!

June 1st marks the beginning of Hurricane Season. There is nothing more stressful than learning that a possibly devastating storm is heading our way. This brochure will introduce what the Cutler Bay community can expect from your local government before, during, and after the storm.

Each year, an average of 10 tropical storms develop over the Atlantic Ocean, Caribbean Sea and Gulf of Mexico. Many of these remain over the ocean. Hurricanes are



dangerous tropical cyclones. Their winds reach a constant speed of at least 74 mph and may gust up to 200 mph. Hurricanes are classified into five categories based on their wind speed, central pressure, and damage potential (see chart). Category Three and higher hurricanes are considered major hurricanes, though Categories One and Two are still extremely dangerous and warrant your full attention. Hurricanes can produce widespread torrential rains. Floods are the deadly and destructive result. Slow moving storms and tropical storms moving into mountainous regions tend to produce especially heavy rain.

IS YOUR HOME UNDER CONSTRUCTION?

The Florida Building Code requires that all construction materials and equipment be secured to prevent displacement during hurricane force winds.

BEFORE THE STORM

To prepare for a hurricane, you should take the following measures:

- Make plans to secure your property. Permanent storm shutters offer the best protection for windows. A second option is to board up windows with 5/8" marine plywood, cut to fit and ready to install.
- Be sure trees and shrubs around your home are well trimmed.
- Clear loose and clogged rain gutters and downspouts.
- Determine how and where to secure your boat.

DURING THE STORM

If a hurricane is likely in your area, you should:

- Listen to the radio or TV for information.
- Secure your home, close storm shutters, and secure outdoor objects or bring them indoors.
- Turn off utilities if instructed to do so. Otherwise, turn the refrigerator thermostat to its coldest setting and keep its doors closed.
- Turn off propane tanks. Avoid using the phone, except for serious emergencies.
- Moor your boat if time permits.
- Ensure a supply of water for sanitary purposes such as cleaning and flushing toilets. Fill the bathtub and other large containers with water.
- Don't forget your pets.



AFTER THE STORM

If a hurricane is likely in your area, you should:

- Generators must only be used outdoors and away from windows, doors, and garages. Make sure your generators has cooled before refueling.
- Do not walk or drive through flooded areas.
- Assess any damages made to your home and report to your homeowners insurance carrier.



YOUR LOCAL GOVERNMENT AT WORK:

Immediately after the storm, when the winds and rain subside, you can expect the following from the Town of Cutler Bay:

- Town personnel will begin damage assessment to the Town's infrastructure. A list of priority services will be established beginning with removal of trees that have caused structural damages on homes.
- Contracted debris removal companies will begin operations when roads are passable. Town administrators will meet with FEMA representatives to ensure costs of debris removal are fair, reasonable, and properly documented.
- The Town of Cutler Bay will deploy Police units to initiate patrol operations throughout the Town to secure business districts and residential areas to prevent civil disturbances and public safety.
- Initial traffic control operations will commence with placement of barricades and stop signs at major intersections without operational traffic signals.

WHEN A HURRICANE THREATENS

Hurricane Watch is issued for a coastal area when there is a threat of hurricane conditions within 24-36 hours.

Hurricane Warning is issued when hurricane conditions are expected in a specified coastal area in 24 hours or less.